



Navigating Provincial Landscape Viewer

The Provincial Landscape Viewer is a mapping tool developed by Lands and Forests (LAF) to provide easy access to the ecological landscape data, along with forestry and wildlife information for natural resource planning and management

This is important as landowners you have the responsibility to meet sustainable, efficiency, stewardship requirements and helps you make decisions based on the geographics of your land. The applications are widespread; it can show you where your watercourses are, you can measure your land, there is forestry data, there's wildlife data, the breakdown of wetlands to swamps, bogs, and drainage areas.

- Supports ecosystem-based natural resource management.
- Land use planning by government.
- Integrated and natural resource data.

Data is inclusive of:

- Forests
- Wildlife
- Wetlands
- Crown lands
- Protected areas

A great video tutorial offered by Cory Roberts, P. Ag, Environmental Farm Plan Coordinator, NSFA, and CTCNS is available [here](#), on the CTCNS YouTube channel's Lunchbreak Series with Christmas Tree Specialist Jay Woodworth!



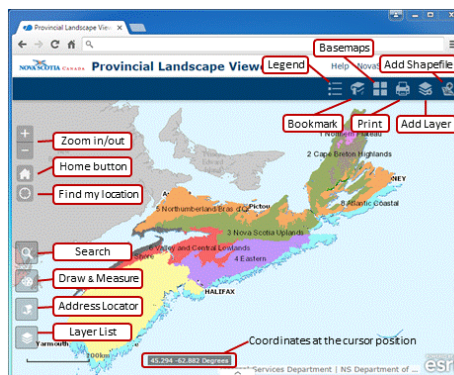
Finding and Navigating Basics of Provincial Landscape Viewer

In Google search engine, search “Provincial Landscape Viewer Nova Scotia”. It should be within the first few results and look like the photo on the right.

URL: <https://nsgi.novascotia.ca/plv/>

Basic features to note:

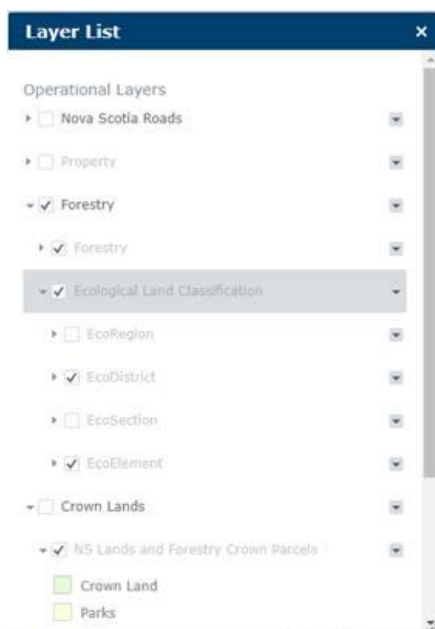
- *Help* feature is robust, good for review.
- Your navigation buttons are located in the top and left of the screen:
 - Home button, Find my Location, Zoom in/out, Search, Draw & Measure, Address Locator, Layer List, Map Scale, Legend, Based Maps, Add Shapefile, Bookmark, Print, Add Layer, and Coordinates.
 - **Zoom In/Out** will incrementally zoom the map in or out with each click.
 - **Home Button** – sets the map to the full extent (returns to the full map of NS and centres the map in the window.)
 - **Find My Location** will place a marker pin on the map at your current location. (Requires a data plan Wi-Fi or cellular phone to operate.)
 - **Pan – Click – Drag** To move the map, click and drag the left mouse button and drag the map to a new place.
 - **Zoom In – Shift + Click – Drag** This allows the user to draw a zoom in box.
 - **Zoom Out – Ctrl + SHIFT – Drag** This allow the user to draw a zoom out box.
 - **Mouse Wheel** Zooms In and Out



Tools

Based Maps and Layers List

- Choose between various base maps. The most used base maps are: Topographic, Imagery and Roads/Streets.
- Topographic will present the user with a detailed topographic map behind the Lands and Forestry data. The topographic mapping will increase and decrease in level of detail as the user changes the zoom levels.
- The NS Topographic base map is maintained by the NS Geomatics Centre and has a greater level of detail than the Topographic base map, which is maintained by ESRI.
- Imagery will present the user with air photo satellite imagery behind the Lands and Forestry data. The level of detail varies in different locations, with urban areas having higher detailed photography.
- Two different imagery base maps are available: NS Imagery is maintained by the NS Geomatics Centre. The other Imagery service is maintained by ESRI, separate from the provincial data.



- Streets is a comprehensive street map that include highways, major roads, minor roads, direction indicators, water features, cities, parks and landmarks. This base layer is maintained by ESRI.
- The layers shown in the Layer List are available for display by clicking the check box next to the layer you wish to see. Individual layers, or all layers in a layer group (e.g., Ecological Land Classification) can be turned on or off this way.
- Not all layers are visible at all zoom levels. Some layers are scale dependant and will turn on or off depending on the display scale of the map. Layers that are available for display at the current scale will appear in darker text. Layers that cannot be displayed at the current scale will appear in fainter text.
- You can expand or collapse the Layer groups by clicking anywhere on the layer group name. You can also see the legend for a layer when it is expanded to its lowest level, as shown for the NS Lands and Forestry Crown Parcels layer in this image.
- The Legend on the top tool bar can be clicked to show what Layers are being shown at any point in action on PLV.



- The Legend describes what each colour or symbol on the map represents.
- Some layers are scale dependant and will turn on or off, depending on the display scale of the map. The items shown in the Legend will change as the map scale changes, with more layers becoming visible as you zoom in, less as you zoom out.
- Use the scroll bar on the right side of the Legend to move up or down and see the full list of layers and items in the Legend.
- In the Layer List, click the down arrow on the far right of any top-level layer group (highlighted at right) and choose Transparency to display a slider bar. Move the slider arrow from Opaque to Transparent to make the layer(s) more transparent. This will allow you to see the information for multiple layers and/or the underlying base layer, as needed.

Descriptions for each layer and sublayer can be found the Help sections of the PLV, [click here](#).

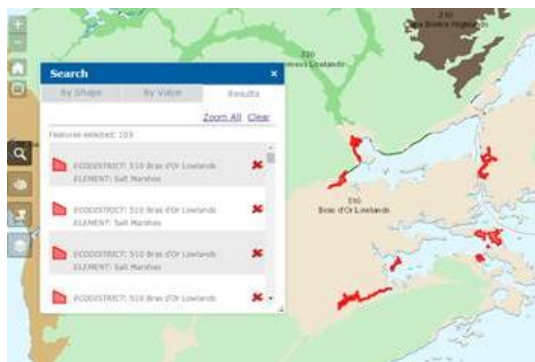
- At any time, you can click on any feature on the map to display attribute information for the selected feature. The outline of the selected feature will be highlighted, and a small window will display the relevant attributes.
 - Click the arrow icon ► to see information on any other active layers at that location (1 of 2) (2 of 2).
 - PIDs are available here.




Search

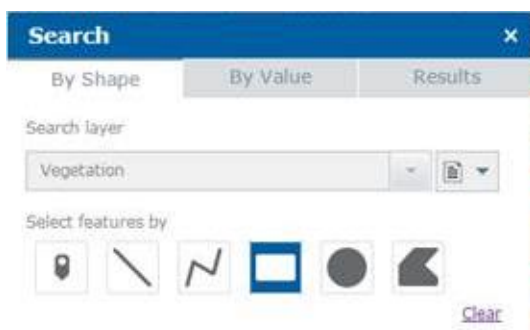
- The Search widget is the “magnifying glass” icon in the left widget toolbar.
- When the Search widget is clicked, the search window at left is displayed and will open to the “By Value” option.
- The Search layer drop down list includes all the map layers that can be searched. Searchable layers include:
 1. EcoDistrict and EcoElement
 2. EcoDistrict and EcoSection
 3. Wetlands
 4. Vegetation
 5. Property
- Depending on the layer selected, different search parameters can be entered below. The example at left shows the parameters for the “EcoDistrict and EcoElement” search.
- If you check the box “Limit search to map extent”, the search will be limited to the area currently displayed on screen



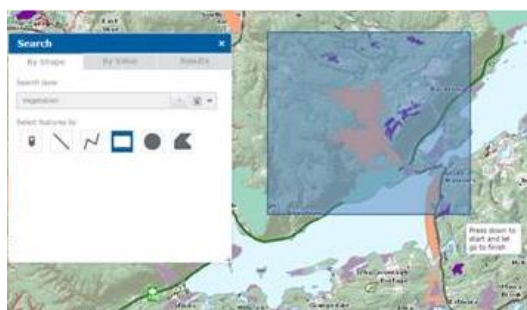


feature will be removed from the results in the list and on the map.

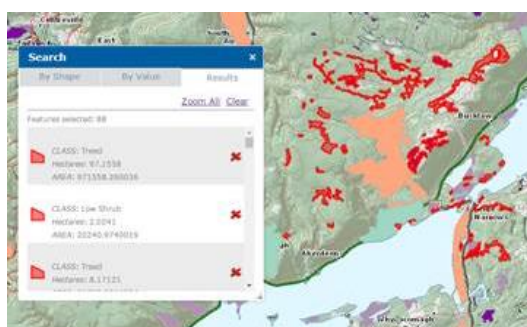
- When the search completes, a list of the results will be displayed in the Results tab of the Search window and the selected features will be outlined in red on the map.
- If you click on any result in the Search window, the map will zoom to the corresponding feature on the map. Click “Zoom All” to return the map to the full extent that displays all search results.
- If you click the  next to an item in the search results list, the




- The search “By Shape” method allows you to find information on a selected layer by drawing a spatial graphic.
- Select a layer from the “Search layer” drop down list.
- Under “Select features by”, choose a search option. The options are **point**, **line**, **polyline**, **rectangle**, **circle** or **polygon**.



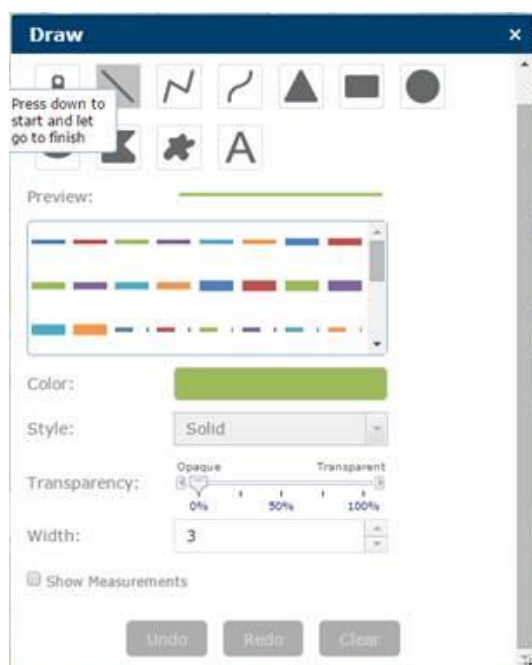
- Click on the map to draw the search shape or point.



- When the search completes, all features that touch or fall within your search shape will be outlined in red on the map. A list of the results will also be displayed in the Results tab of the Search window.
- If you click on any result in the Search window, the map will zoom to the corresponding feature on the map. Click “Zoom All” to return the map to the full extent that displays all search results.
- If you click the  next to an item in the search results list, the feature will be removed from the results in the list and on the map.



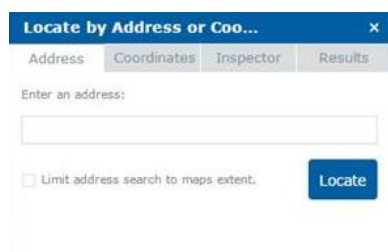
Draw and Measure



- The Draw and Measure widget allows the user to place graphics, text and measurement information on the map face prior to printing. It provides basic "sketching" and "redlining" functions to mark up the map.
- When the widget is initially opened, the user is presented with the following 11 drawing tools. From left to right, they are:
 - Point, Line, Polyline, Freehand line, Triangle, Rectangle, Circle, Ellipse, Polygon, Freehand polygon, Text
- Once you select a drawing tool (e.g., Line), choose a Colour, Line Style, Transparency and Width. A Preview of the options you selected will be displayed at the top of the window. If you would like to include measurements for the feature you draw on the map, select Show Measurements.

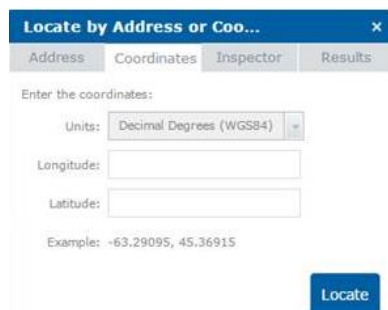
- Click and drag your mouse on the map to start drawing the line, rectangle, etc. Let go of your mouse button to finish drawing the feature. You can add multiple shapes and text to the map before you print it.

Location by Address or Coordinates



- The dialogue will present the user with two methods for finding a location: Address or Coordinates.

- Locate by Address will allow the user to enter a civic address to be located. When the Search button is clicked, the site will reorient itself to the new location.



- Locate by Coordinates will allow the user to select the units (e.g. decimal degrees, Lat/Long, etc.), then enter a set of coordinate values. When the Locate button is clicked, the map will reorient to display the location.


- The Inspector tool allows the user to click on any civic addressed point on the map and display the full civic address information. The map will be zoomed in to show the location selected.



Bookmarks



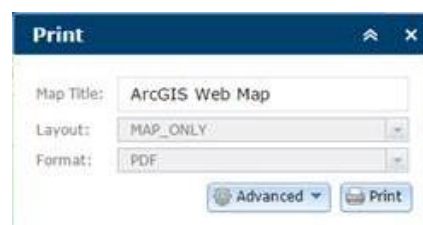
Bookmarks will allow you to name and save a specific location on the map. When you enter a Bookmark Name (in this example, Arisaig) and click the (+) symbol, the bookmark will be added to the list for the current map location. Click the bookmark name again and the map will zoom to that map location.

You can remove any bookmark you have added by clicking the  symbol next to it.

Finishings

Print

- This feature allows the user to print a map with all the information displayed on the screen.
- The Layout drop down list allows you to select from various page layout options (e.g., Letter or Tabloid page size, Portrait or Landscape, etc.). The Format drop down list allows you to select from various output file formats such as PDF, JPG, GIF, or EPS.
- The Advanced button allows you to set additional features such as the map size, print quality, or include a legend.



Add a Map Service

- The Add a Map Service button allows you to add a map service into the viewer and display the data on the map along with the Lands and Forestry data.
- Enter, or copy and paste the URL of the web service in the URL field.
- Click the Add Service button and the new layer will be displayed on the map. The layer name will also appear in the Layer List and as for other layers, can be turned off or on by clicking the check box next to the layer.



Add a Shapefile

- Add a Shapefile allows the user to upload an ESRI shapefile and display the data on the map.
- The Add a Shapefile window is shown at left. Click 'Add File' to open a dialogue to locate and select the zipped shapefile on your computer. Once selected, the shapefile will be uploaded, symbolized and displayed on the map.

